

# THE LEXINGTON CLUB

ALL OF HAMILTON PLACE - P.U.D.  
 A RESUBDIVISION OF PINECREST PARK, P.B.4 PAGE 11 AND A  
 PORTION OF PALM BEACH FARMS COMPANY PLAT NO. 1 P.B. 2  
 PAGES 26 THROUGH 28, PALM BEACH COUNTY RECORDS,  
 LYING IN SECTION 21 TOWNSHIP 46 SOUTH, RANGE 42 EAST  
 PALM BEACH COUNTY, FLORIDA  
 IN 8 SHEETS SHEET NO. 6

Post, Buckley, Schuh & Jernigan, Inc.  
 CONSULTING ENGINEERS PLANNERS AND SURVEYORS



JANUARY 1987

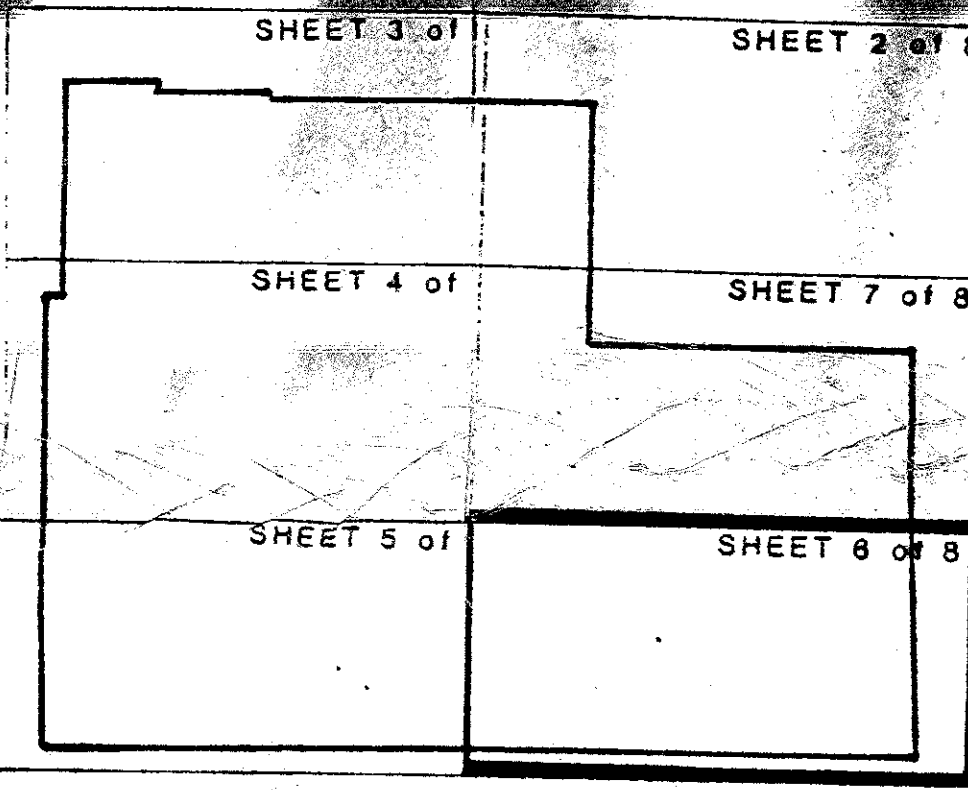
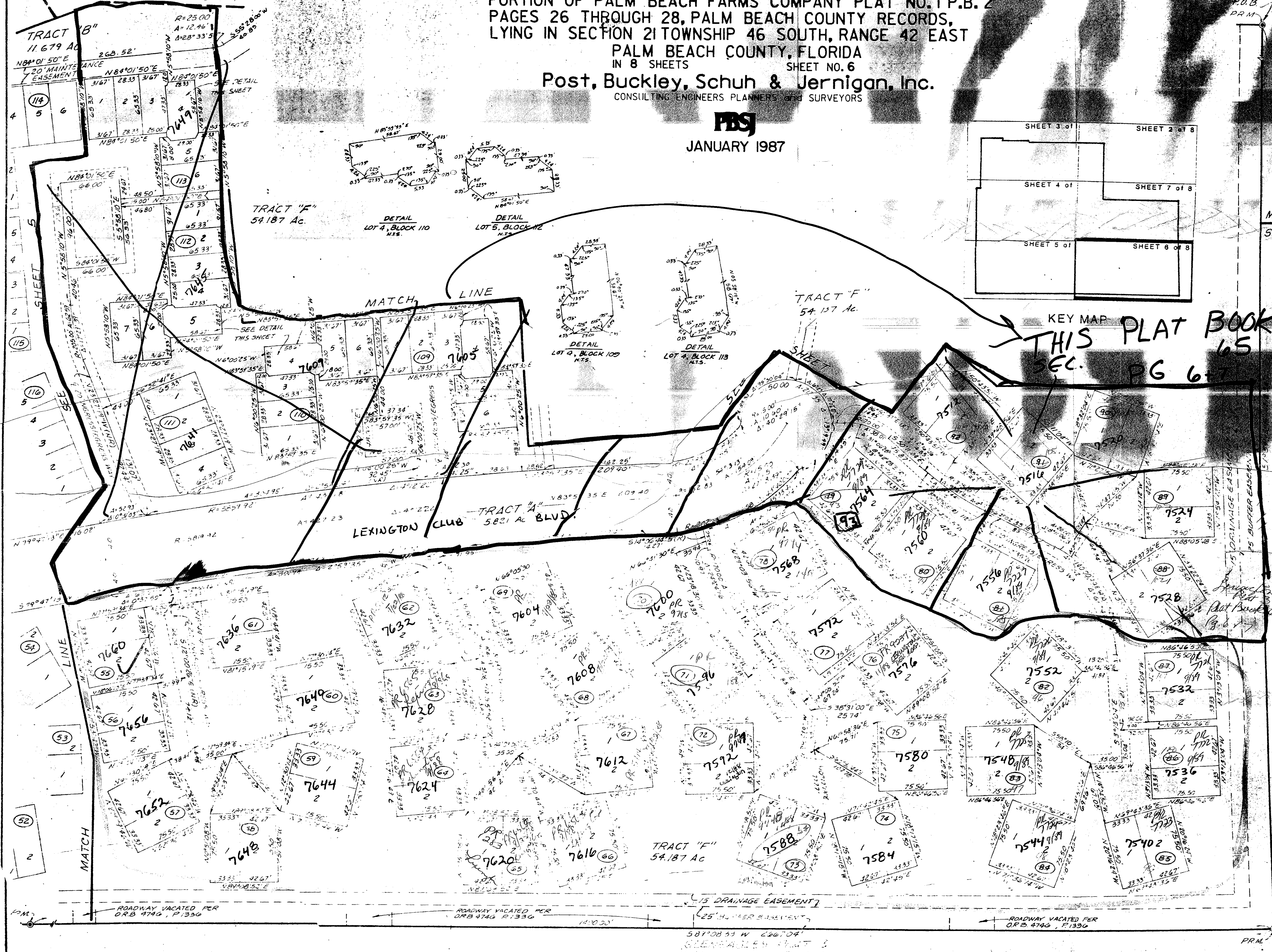
STATE OF FLORIDA  
 COUNTY OF PALM BEACH

97

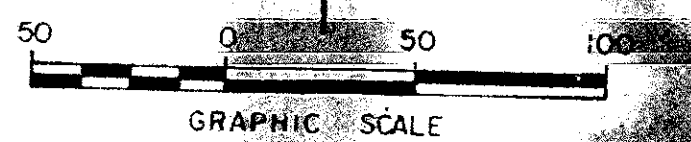
THIS MAP IS FOR RECORD AND DULY FILED IN PLAT BOOK PAGE

JOHN W. HALE  
 COUNTY CLERK

D.C.



MATCH LINE  
 SEE SHEET 7



KEY MAP  
 THIS PLAT BOOK 65  
 SEC. PG 6

SUBDIVISION  
 BOOK  
 FLOOD ZONES  
 QUAD  
 SE  
 PUD NAME

PAGE  
 FLOOD MAP  
 ZONING  
 ZIP CODE

0506-002

ADO. BY  
 (Signature)

SE CORNER OF PINECREST PARK  
 P.B. 4, P. 11